

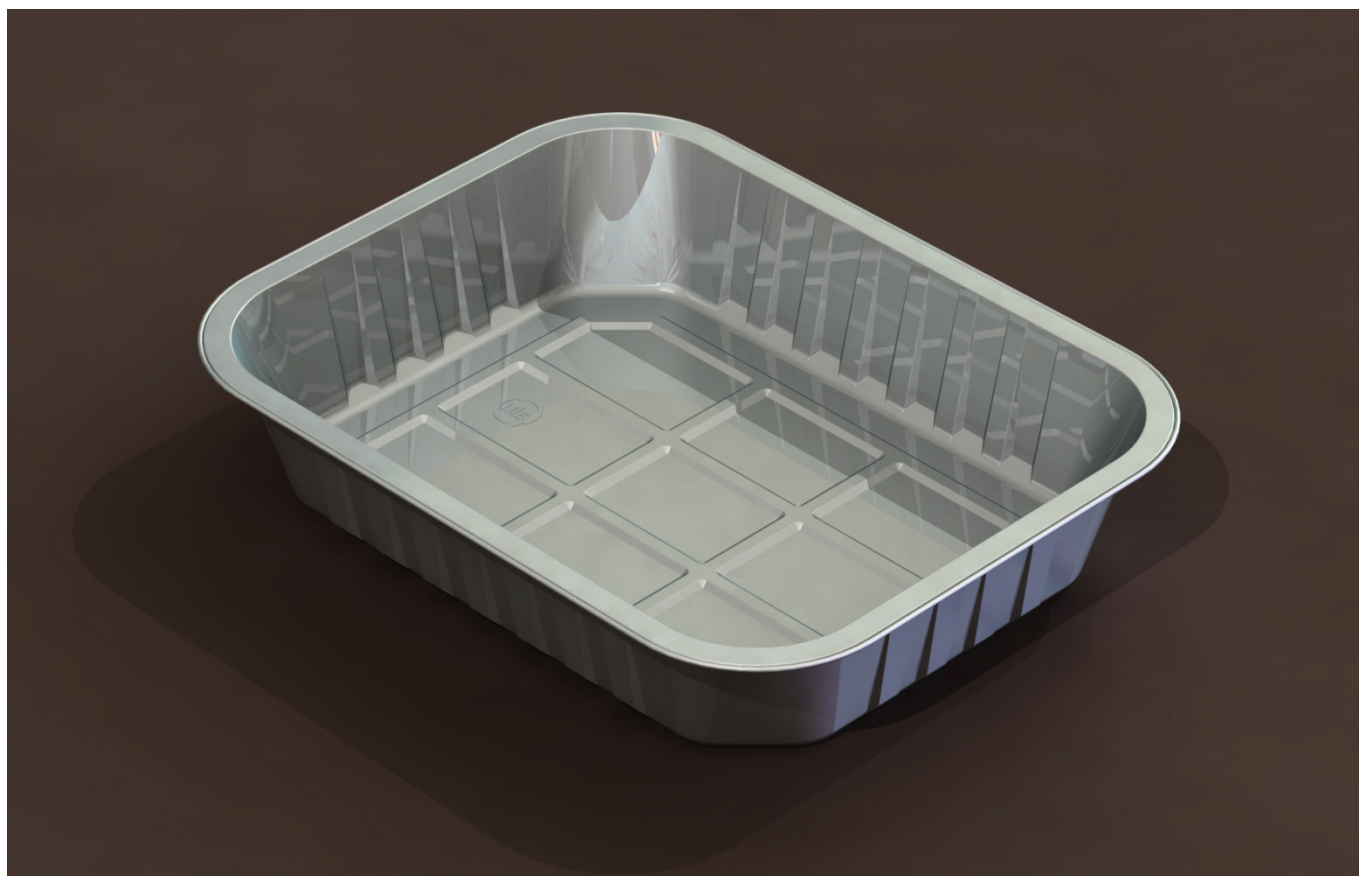
CHOOSE i2r PACKAGING SOLUTIONS

solutions²shelf

Fantastic New Product From i2r

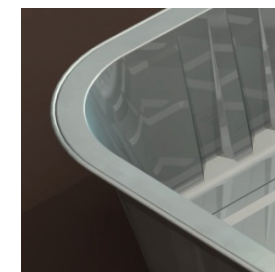
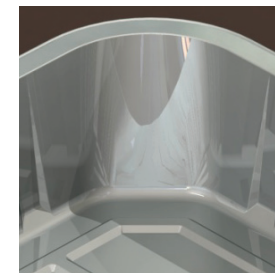
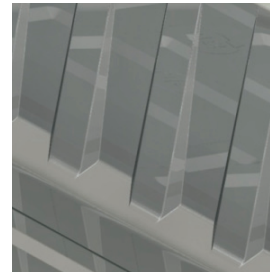
AS223320-01 (Industry equivalent D244-60)

This fantastic new product from i2r is perfect for cooking large joints of meat or poultry, family sized ready meals and tray bakes. This enhanced tray delivers real choice and uniqueness to the market in terms of quality, design and packaging weight reduction



CONTITAL  i2r

Tray Specifications	
Product	AS223320-01
Description	Smooth wall large rectangular tray
Capacity (mm³)	3,320
Top Out (mm)	312 x 244
Top In (mm)	288 x 220
Base (mm)	262 x 194
Vertical Depth (mm)	60
Pack	TBA
Pallet Quantity	TBA



Once again our tray delivers not only the highest quality in terms of appearance and strength but essentially it carries the **i2r** trademark of being the lightest tray of its kind in the industry.

This product is available in a wide variety of materials including the standard no lacquered plain silver, coloured outside lacquer for improved aesthetics and coatings to assist heat sealing when required.

This product is manufactured and stocked in the UK to give complete customer convenience and flexibility.

For more details including samples for trials, please contact the sales office by phone on 0845 371 5111 or by email on sales@i2rps.com

CHOOSE i2r PACKAGING SOLUTIONS

solutions²shelf